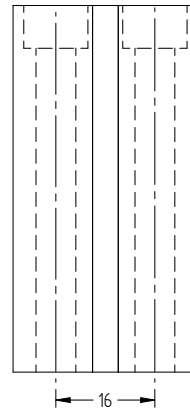
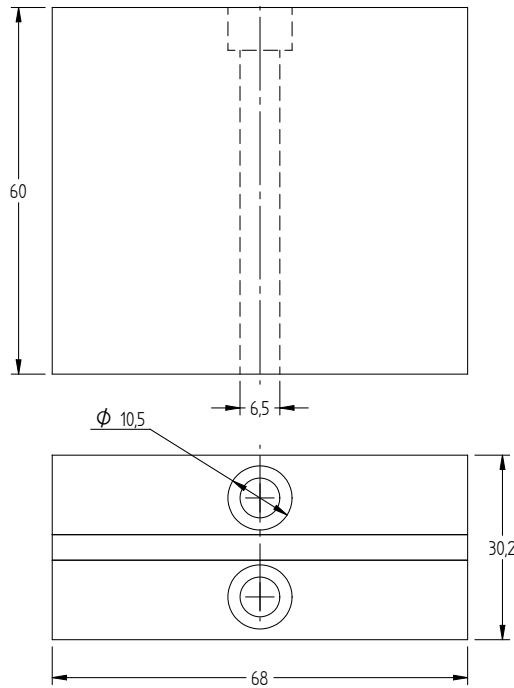


CSM 300

Conduction-cooled capacitor

Technology Patented Worldwide



The CSM 300 is a 300kVA capacitor very similar in its electrical characteristics to the popular CSP 305A and CSP 305B. However, its unique structure enables top mounting on two parallel bus bars.

Specifications

TYPE		CSM 300							
Dimensions (L x W x H)	mm	68 x 60 x 30.2							
Weight	kg	0.45							
Capacitance ($\pm 10\%$)	μF	0.1	0.2	0.33	0.66	1	1.32	2.6	5
Sinusoidal Voltage	V_{rms}	1000		700		600		500	400
Peak Voltage	\hat{V}	1410		990		850		710	570
Max. Current	A_{rms}	400		500		650		800	
Max. Power	kVA _r	300							
Freq Range @ Full Power	kHz	477-849	239-424	295-402	148-201	133-224	100-170	73-86	60-68
Stray Inductance	nH	< 5							
Freq Limit	kHz	1000							

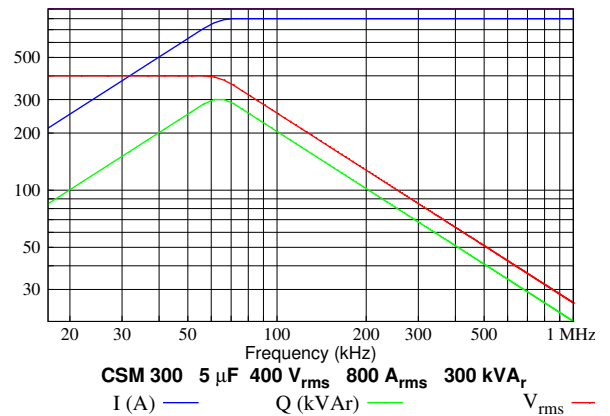
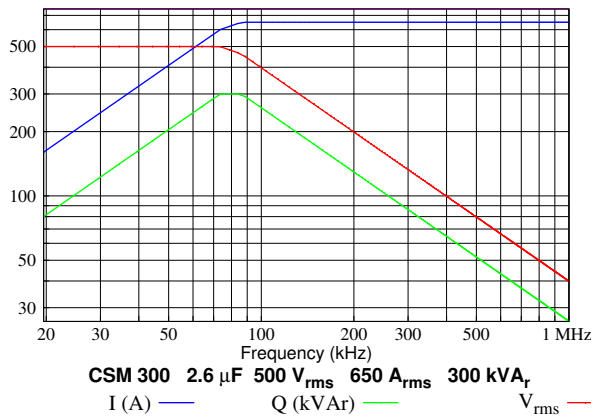
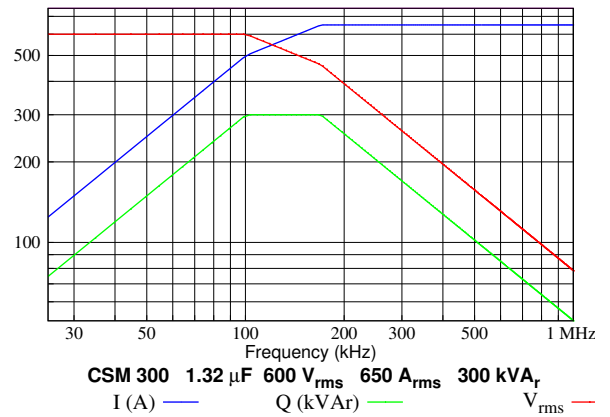
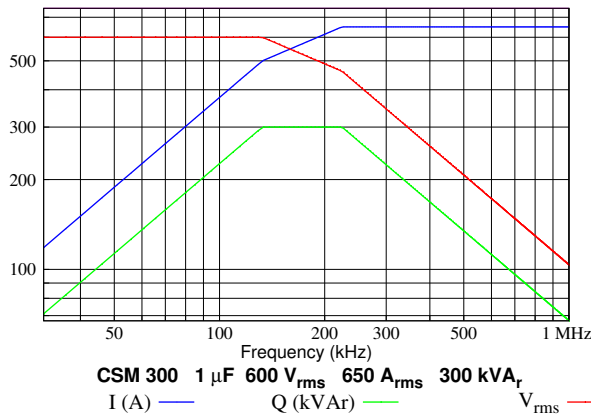
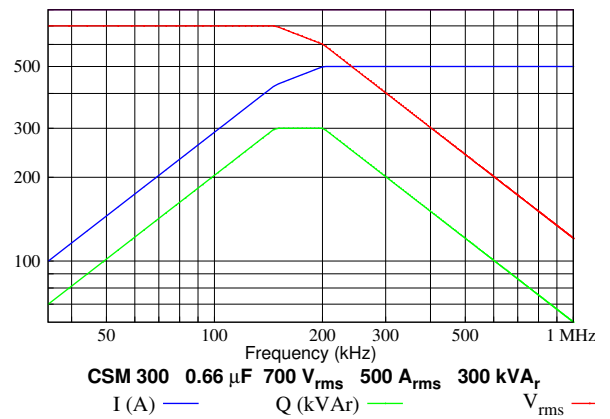
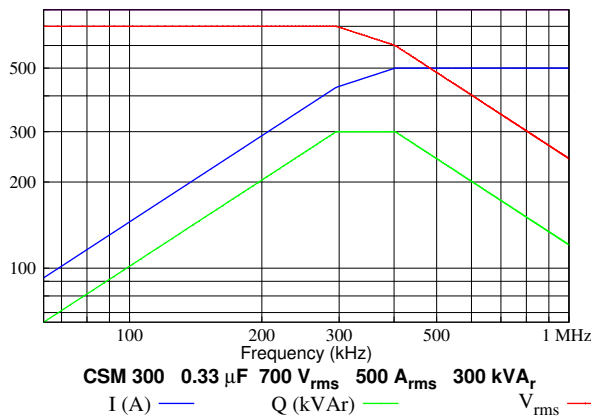
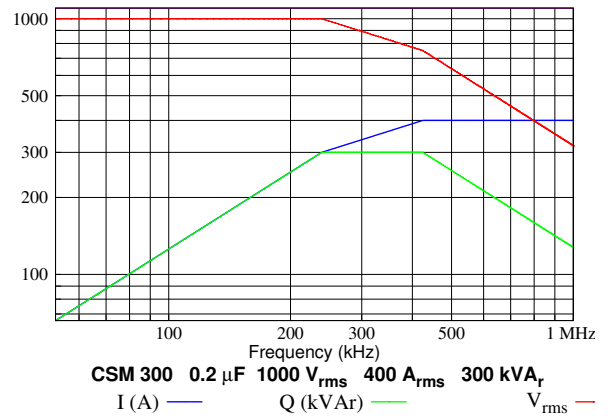
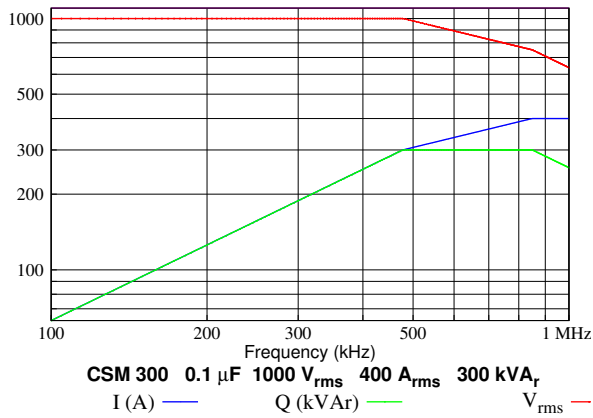
Celem Power Capacitors

Produced: March 17, 2009

CSM 300

Conduction-cooled capacitor

Technology Patented Worldwide



Celem Power Capacitors

Produced: March 17, 2009