

CSM 800

CSM 800 is a new development by Celem targeting high frequency high power applications.

The new CSM 800 is a water-cooled capacitor allowing 800 KVAR in a very small design.

The unique capacitor can be mounted either on top of two adjacent parallel bus bars using the 4 through holes in the capacitor (similar to the well-known CSM capacitor series) as shown in Illustration 1A OR between two plates (similar to our CSP series) as shown in Illustration 1B.

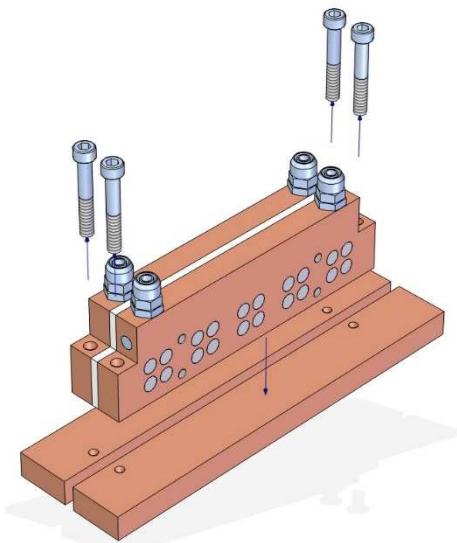
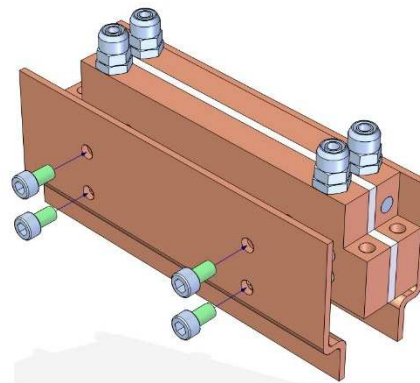


Illustration 1A



1B

Correct mounting and cooling guarantees full power performance provided that electrode temperature is ≤ 40 degrees C.

Regardless of the chosen connection, to ensure maximum performance, current must be collected perpendicular to the line of the elements (blue axis in the drawing below) and in the direction of the red arrows as shown in Illustration 2.

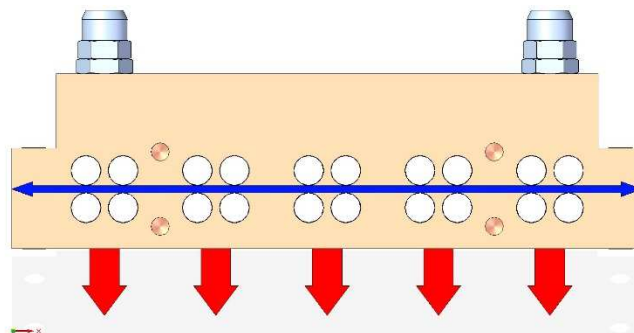


Illustration 2